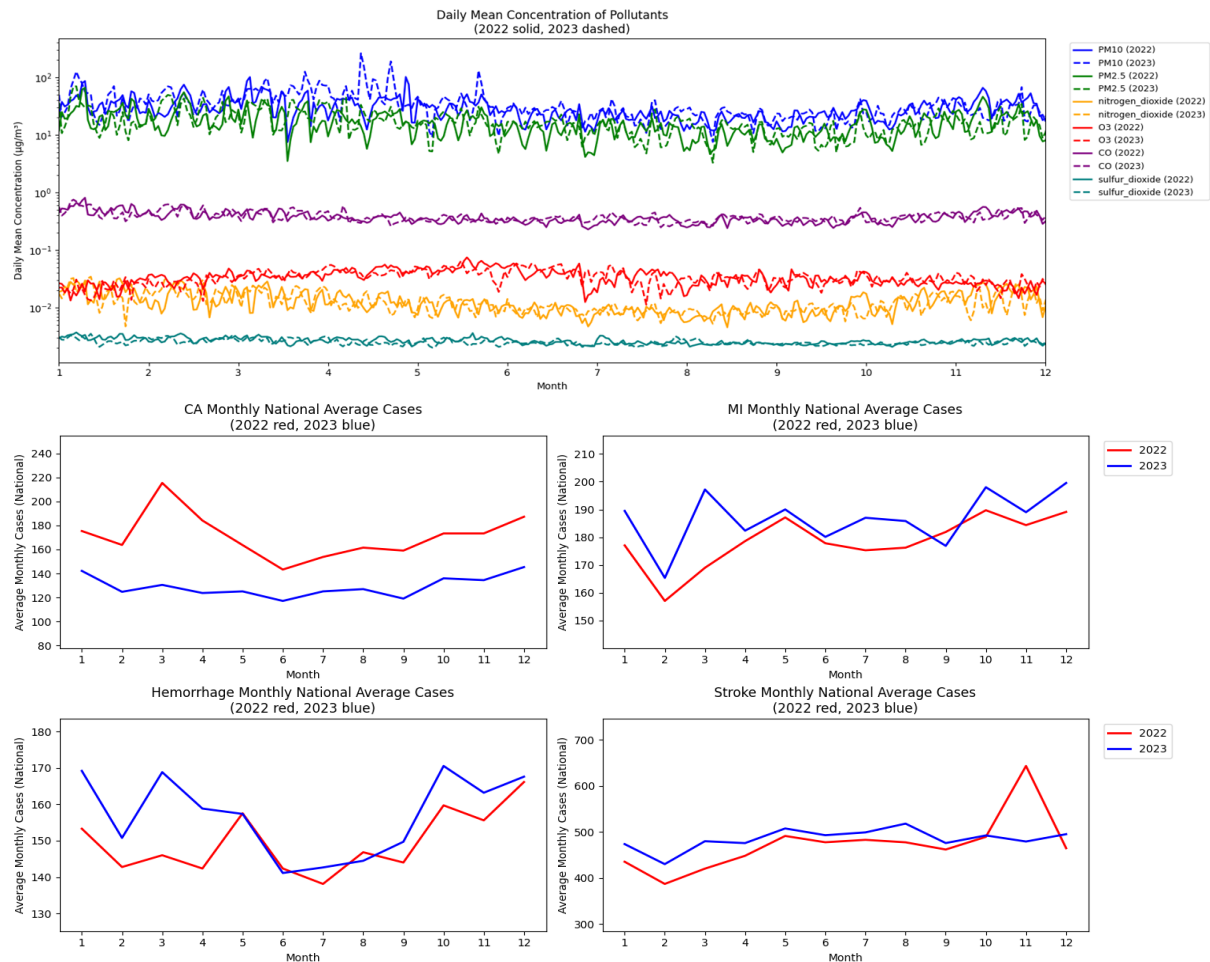


Supplement 1. Temporal Trends in Daily Air Pollutant Concentrations and Monthly Disease Incidence (2022–2023)



This figure presents the time series of daily mean air pollutant concentrations and monthly national average emergency room visits for cardiovascular and cerebrovascular diseases during 2022 and 2023.

Top Panel:

Daily mean concentrations (log scale) of six air pollutants: PM₁₀, PM_{2.5}, NO₂, O₃, CO, and SO₂. Solid lines represent 2022 data, and dashed lines represent 2023 data. Each pollutant is color-coded for clarity.

Bottom Panels (four subplots):

Monthly national average cases of: Cardiac arrest (CA), Myocardial infarction (MI), Hemorrhagic stroke, Ischemic stroke

Red lines indicate 2022 trends, and blue lines indicate 2023 trends.

These visualizations highlight the seasonal and inter-annual variability in pollutant exposure and disease incidence, providing descriptive context for the network analyses presented in the main text.